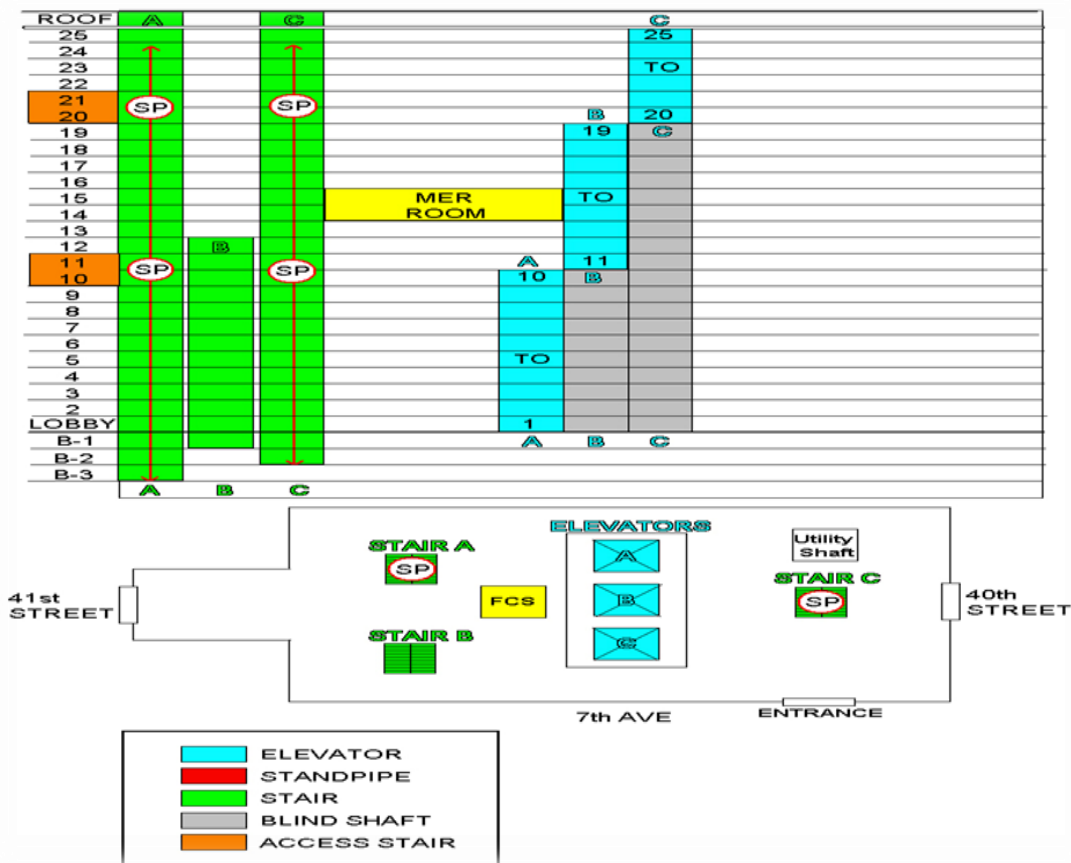




# High Rise Scenario

You respond as the Chief Officer (C-1) to Box Alarm 477 for a report of a fire in a 25 story, Class 1, Residential High-Rise building located at 321 7<sup>th</sup>. Avenue. While en-route you receive additional information stating that the fire is on Floor 15 in Apartment Unit 15-C.





# Floor 15



- **Students are encouraged to write on – use the enclosed as their Command-and-Control Worksheet for both the IC and Operations positions.**



## Incident Commander worksheet

### BOX 477 - ALARM ASSIGNMENT

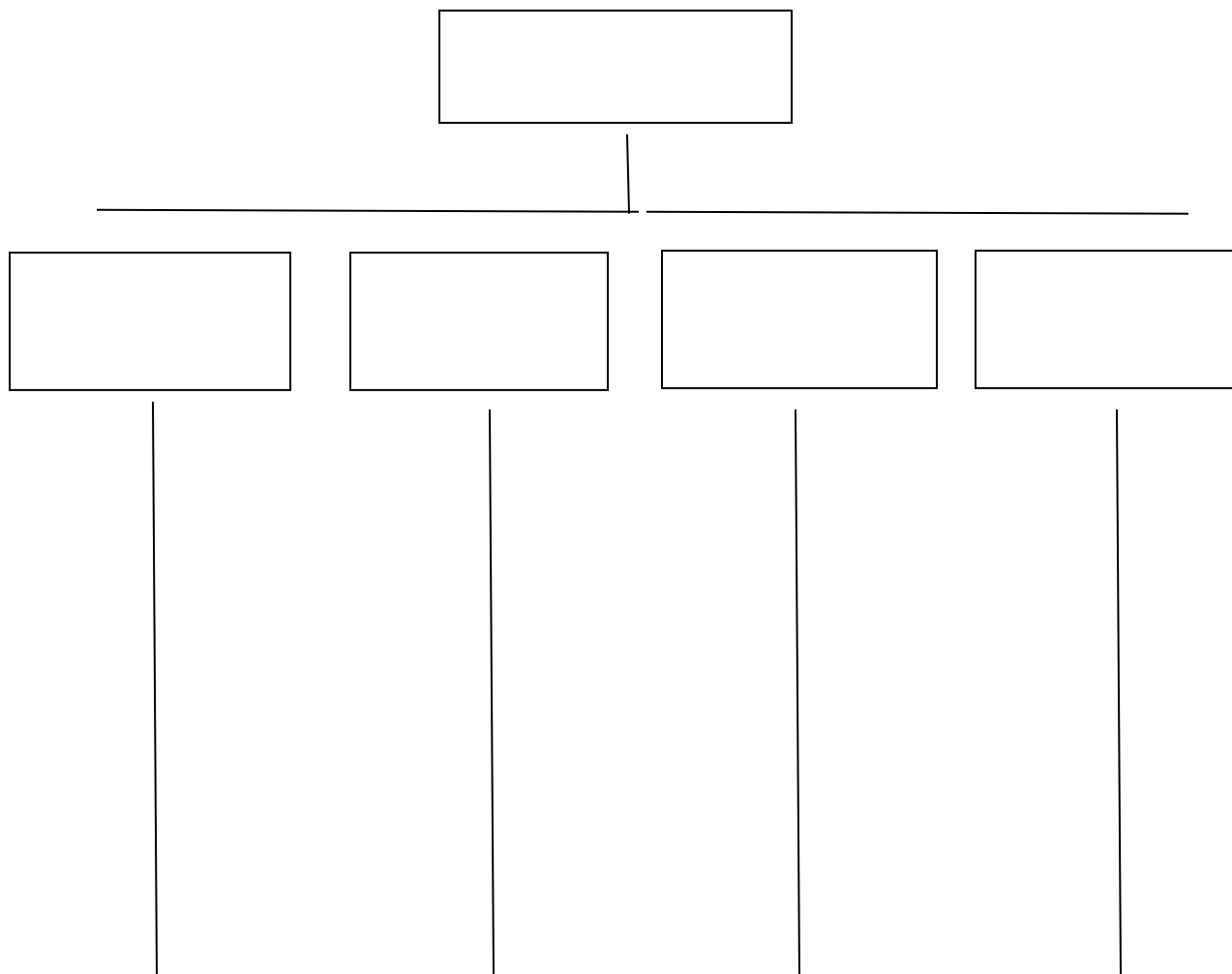
**1<sup>st</sup>. Alarm – Engines 1-2-3-4, Ladders 1-2, Chief 1**

**2<sup>nd</sup>. Alarm – Engines 5-6-7, Ladders 3-4, Chief 2**

**3<sup>rd</sup>. Alarm – Engines 8-9-10, Ladders 5-6, Chief 3**

**4<sup>th</sup>. Alarm – Engines 11-12-13, Ladders 7-8, Chief 4**

- **Students may Special Call any other resources they feel are necessary.**
- **Each Apparatus has an Officer and 3 firefighters**





## Operations Chief worksheet

### BOX 477 - ALARM ASSIGNMENT

**1<sup>st</sup>. Alarm – Engines 1-2-3-4, Ladders 1-2, Chief 1**

**2<sup>nd</sup>. Alarm – Engines 5-6-7, Ladders 3-4, Chief 2**

**3<sup>rd</sup>. Alarm – Engines 8-9-10, Ladders 5-6, Chief 3**

**4<sup>th</sup>. Alarm – Engines 11-12-13, Ladders 7-8, Chief 4**

- **Students may Special Call any other resources they feel are necessary.**
- **Each Apparatus has an Officer and 3 firefighters**

